



Laser with M12 Connector

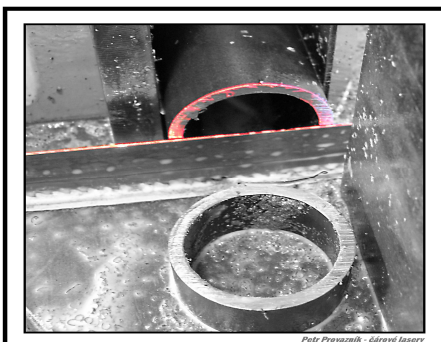
Laser with high endurance, adapted to operate in industrial conditions.

Technical specifications and variations we can offer in this version:

- Wave length: ●650nm, ●635nm, ●532nm, ●450nm; ●405nm, ●1064nm and 1083nm
- Power: ●●●1mW, ●1mWHT, ●3.5mW, ●●●●5mW, ●●5mWHT, ●●10mW
- Beam shape: ● point
 - † cross 8.8°, 15°, 55°, 85°
 - line through cylindrical optics 35°, 45°, 70°, 85°, 110°
 - line through wave optics 5°, 20°, 36°, 45°, 60°, 90°, 120°
 - shape by diffraction optics- 70 types (e.g.: net, dotted, more lines, circle)
- Supply voltage: ●●●●●3VDC, ●●6~30V AC/DC; ●●●●●4,5~42VDC
- Supply current: 35mA ~ 200mA depending on the laser power and electronics.
- Thermal resistance: ●● -12~45°C, ● HT -10~70°C; ●●●● -10~35°C, ● HT -10~50°C
- Cabling length: as required up to 100m (by the supply voltage). Type 2x0.5mm²
- IP rating: IP65, IP68 (waterproof up to 0.5ATM-5m)
- Connector: M12 4pin, M12 3pin, straight or angled 90°, IP68
- Dimensions: tubing 17.8 x 100mm + connector M12 45mm (90° - 40mm)
- Weight: 30g without cable
- Tubing material: Dural, black eloxal coat
- Laser classes according to IEC60825-1 2014 ed3: 2, 2M, 3R or 3B

Main advantages of our lasers:

- Overvoltage protected (●● galvanically separated circuits for 400V)
- Solid supply cable for all the models
- No vibration-releasing parts in all the models
- Washable outlet lens (optics is covered) in all the models
- Pole reversal impossible in assembly ●● (AC and DC power supply)



WWW.CAROVE-LASERY.CZ

CE





Contact

Invoices to:

Petr Provazník-čárové lasery
Němčany 268
684 01 Slavkov u Brna
Czech Republic

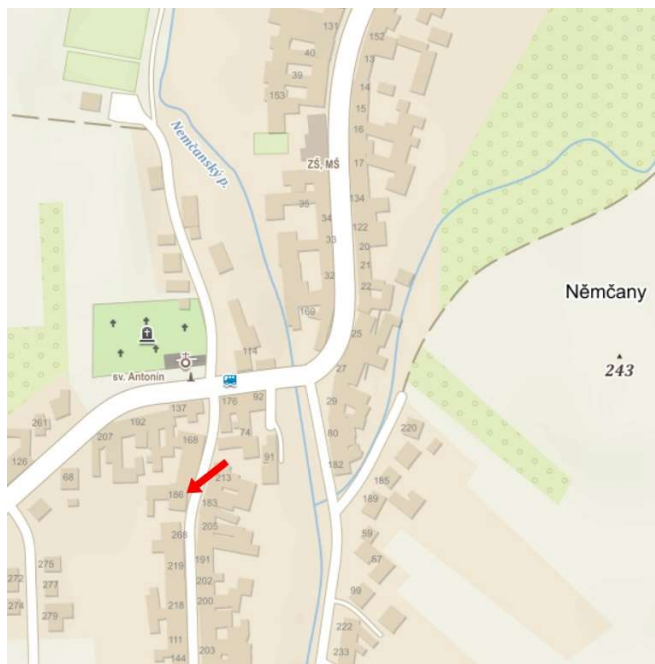
Company ID: 73771058

VAT ID: CZ7706274675

Plant:

Němčany 186
684 01 Slavkov u Brna

Phone: +420 607 865 724



Operation hours Mon-Fri from 8 to 17 o'clock.

E-mail: provaznik@carove-lasery.cz

Or: petr-provaznik@volny.cz

Web: www.carove-lasery.cz