



## Laser with sealed cable

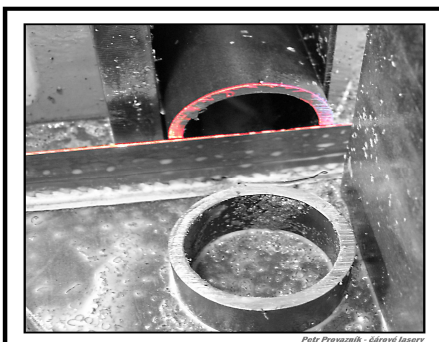
Laser with high endurance, adapted to operate in industrial conditions.

Technical specifications and variations we can offer in this version:

- Wave length: ●650nm, ●635nm, ●532nm, ●450nm; ●405nm, ●R1064nm and 1083nm
- Power: ●●●●●1mW, ●1mWHT, ●3.5mW, ●●●●●5mW, ●●5mWHT, ●●10mW
- Beam shape: ● point
  - † cross 8.8°, 15°, 55°, 85°
  - line through cylindrical optics 35°, 45°, 70°, 85°, 110°
  - line through wave optics 5°, 20°, 36°, 45°, 60°, 90°, 120°
  - shape by diffraction optics- 70 types (e.g.: net, dotted, more lines, circle)
- Supply voltage: ●●●●●3VDC, ●●6~30V AC/DC; ●●●●●4,5~42VDC
- Supply current: 35mA ~ 200mA depending on the laser power and electronics.
- Thermal resistance: ●● -12~45°C, ● HT -10~70°C; ●●●●● -10~35°C, ● HT -10~50°C
- Cabling length: as required up to 100m (by the supply voltage). Type 2x0.5mm<sup>2</sup>
- IP rating: IP65, IP68 (waterproof up to 0.5ATM-5m), IP69 (waterproof up to 2ATM-20m)
- Dimensions: tubing 15.8 x90mm
- Weight: 25g without cable
- Tubing material: Dural, black eloxal coat
- Laser classes according to IEC60825-1 2014 ed3: 2, 2M, 3R or 3B
- Optional cable: putty, plastic outlet, shrink tubing with adhesive

### Main advantages of our lasers:

- Overvoltage protected (●● galvanically separated circuits for 400V)
- Solid supply cable for all the models
- No vibration-releasing parts in all the models
- Washable outlet lens (optics is covered) in all the models
- Pole reversal impossible in assembly ●● (AC and DC power supply)





## Contact

### Invoices to:

Petr Provazník-čárové lasery  
Němčany 268  
684 01 Slavkov u Brna  
Czech Republic

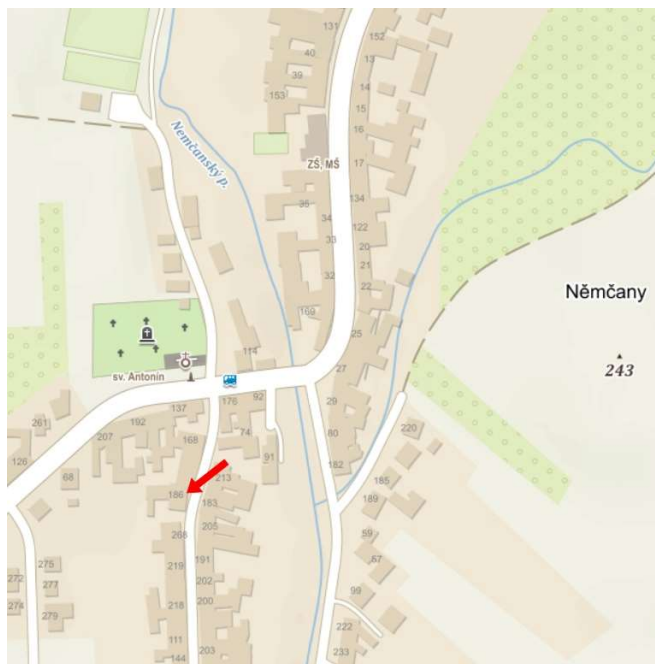
Company ID: 73771058

VAT ID: CZ7706274675

### Plant:

Němčany 186  
684 01 Slavkov u Brna

Phone: +420 607 865 724



**Operation hours** Mon-Fri from 8 to 17 o'clock.

E-mail: [provaznik@carove-lasery.cz](mailto:provaznik@carove-lasery.cz)

Or: [petr-provaznik@volny.cz](mailto:petr-provaznik@volny.cz)

Web: [www.carove-lasery.cz](http://www.carove-lasery.cz)