



Laser with shortened tube and sealed cable

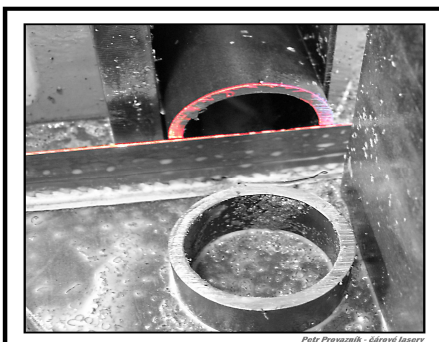
Laser with high endurance, adapted to operate in industrial conditions.

Technical specifications and variations we can offer in this version:

- Wave length: ● 650nm, ● 635nm
- Power: ● 1mW, ● 3.5mW, ● 5mW, ● 5mWHT, ● 10mW
- Beam shape: ● point
 - † cross 8.8°, 15°, 55°, 85°,
 - line through cylindrical optics 35°, 45°, 70°, 85°, 110°
 - line through wave optics 5°, 20°, 36°, 45°, 60°, 90°, 120°
 - shape by diffraction optics- 70 types (e.g.: net, dotted, more lines, circle)
- Supply voltage: ●● 3VDC
- Supply current: 35mA ~ 85mA depending on the laser power and electronics..
- Thermal resistance: ●● -12~45°C, ● HT -10~70°C
- Cabling length: as required up to 100m (by the supply voltage).
- Cable type: Ø 5mm-2x0.5mm² black, or thinner Ø 3.5mm -2x0.25mm² gray
- Cover IP65 with plastic outlet. IP68 (waterproof up to 0.5ATM-5m), IP69 (2ATM – 20m)
- Dimensions: tubing **15.8 x 45mm**
- Weight: 15g without cable
- Tubing material: Dural, black eloxal coat
- Laser classes according to IEC60825-1 2014 ed3: 2, 2M, 3R or 3B

Main advantages of our lasers:

- Overvoltage protected (●● galvanically separated circuits for 400V)
- Solid supply cable for all the models
- No vibration-releasing parts in all the models
- Washable outlet lens (optics is covered) in all the models
- Pole reversal impossible in assembly ●● (AC and DC power supply)





Contact

Invoices to:

Petr Provazník-čárové lasery
Němčany 268
684 01 Slavkov u Brna
Czech Republic

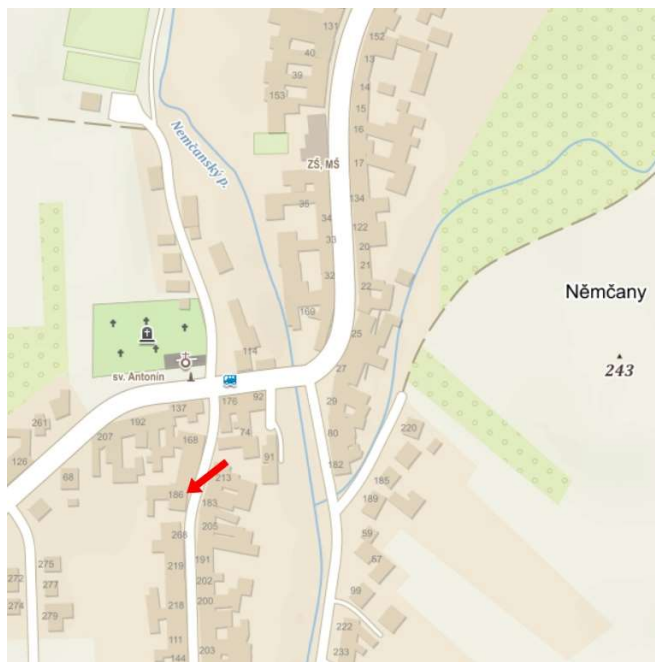
Company ID: 73771058

VAT ID: CZ7706274675

Plant:

Němčany 186
684 01 Slavkov u Brna

Phone: +420 607 865 724



Operation hours Mon-Fri from 8 to 17 o'clock.

E-mail: provaznik@carove-lasery.cz

Or: petr-provaznik@volny.cz

Web: www.carove-lasery.cz